



# 20th World Congress of Soil Science

In commemoration of the  
**90<sup>th</sup> Anniversary of the IUSS**

**Soils Embrace Life and Universe**

June 8 -13, 2014 ICC Jeju, Korea

[www.20wcsc.org](http://www.20wcsc.org)

Hosted by



Korean Society of  
Soil Science and Fertilizer



Rural Development  
Administration



International Union of  
Soil Sciences

## IMPORTANT DATES

**Abstract Submission  
Open**

May, 2013

**Notification of  
Abstract Acceptance**

January 15, 2014

**Deadline for  
Abstract Submission**

October 31, 2013

**Deadline for  
Early Registration**

March 20, 2014





## KOREA

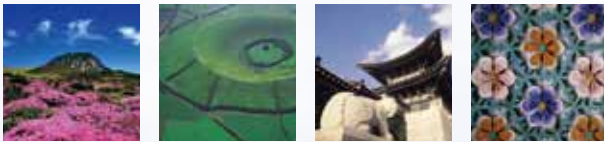
[www.visitkorea.or.kr](http://www.visitkorea.or.kr)

Korea is a nation that boasts a fast growing economy and a lifestyle that brings together the old and the new. Once known simply as a quiet nation in the East, the peninsula now hardly sleeps as it pulsates with life and commerce. In the face of modernity, Koreans still greatly value their 5 millennia of culture and history and the Confucian philosophy that has governed the lives of their ancestors.

## JEJU ISLAND

[www.ijto.or.kr](http://www.ijto.or.kr)

Jeju is proud of its unique cultural folk heritage as well as its geographical and historical relevance. The island itself is an extinct volcano with its peak jutting skyward at the center and a broad, gentle littoral all the way around, a very unique geographical condition. In June 2007, the volcanic island and lava tube cave systems were designated as UNESCO World Natural Heritage Sites for their natural beauty and geographical value. Jeju Island is Korea's most prestigious destination and top honeymoon location.



## VENUE FOR 20WCSS: ICC Jeju

[www.iccjeju.co.kr](http://www.iccjeju.co.kr)

ICC Jeju has been a venue for several political joint summit talks and other major international scientific conferences. Sitting just on the Pacific Ocean, it commands splendid panoramas of the sea and mountains in harmony. Archetypal tuff cone shaped modern architecture provides a spacious, enjoyable and comfortable venue for 20th WCSS.

## JEJU SOIL AND LANDSCAPE

The soil of Jeju is unique due to its formation from volcanic activities, which are composed of dark-brown and black volcanic ash soils (Andisols). They are characterized by greater Pretention, high OM and CEC, low fertility, and high allophane. The basaltic lava flow and sedimentation have created a geologically unique landscape. Professional and educational field tours are available for you to explore the value of Jeju soil.

